



El Foly Group



Company Profile



About Company

- **El FOLY Group** - was founded in 1996. It operates locally with a well-balanced and diversified portfolio, and is involved in handling products and provision of services in a broad range of sectors.

These areas encompass health care, education, hospitality, Construction & Real estate Development and advertising.



OUR MISSION

is to embrace client satisfaction as our way of life we strive to be an innovative, competitive business enterprise we shall provide our family of employees opportunities for personal and professional growth we seek to be looked upon by our business partners with trust and respect we shall remain conscious of our social responsibility and our role in community development and nation building

OUR VISION

is to be recognised as global enterprise that provides excellence delivery of our services & products , to provide sustainable & increasing value to our clients and business partners



Our Projects

A) Health Care sector

We have three projects in this sector:

Qudorat Company for Specialized Medical Services

It is a company that specializes in hospital management, home care services as well as in both long-term and short-term rehabilitation.

Qudorat Rehabilitation centers

Qudorat was established in 2014 to be pioneers to offer inpatient hospitalization, nursing and providing special medical care with the highest quality that always satisfies patients' needs and exceeds their expectations.

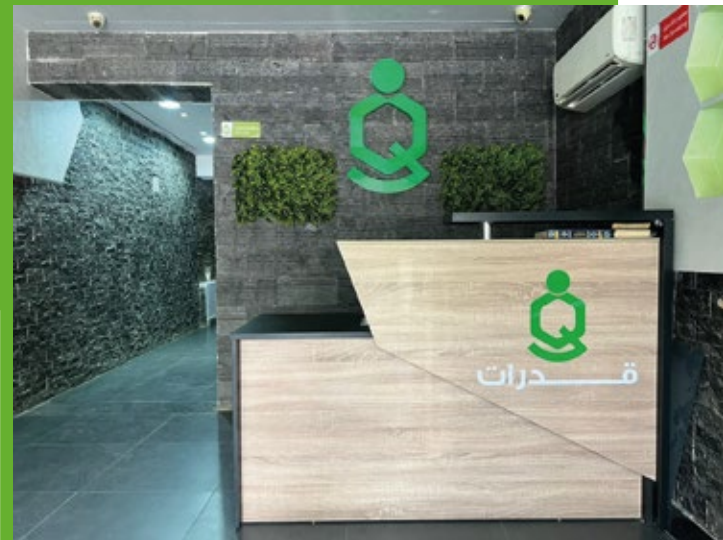


NEW YOU

We **always** were near to our customers in our expansion plans. So we **establish** new branches in: Mohandessin, Faisal, Dokki, Nasr city, Shebeen El-kom and Mansoura.

From the first moment, we **committed** to use cutting edge technologies & techniques by a highly **qualified medical** staff, especially in the field of orthopedics and **physiotherapy** to ensure patient safety, **satisfaction and** comfort during their residence period at the center.

Due to **strategic planning**, team spirit, hard work, and dedication, number of patients visiting our clinics **annually** is around **21,800**, the size of the invested capital is \$ **1,750,000** (\$ **2,750,000** at the time of investment), and the average annual sales volume is \$ **3,500,000**.



Qudorat Al-Wadi Hospital

we got together so you could be reassured

Qudorat Specialized Medical Services Group has acquired **Al-Wadi Hospital** in a blockbuster launch of 110 beds - 3 operation rooms (catheter - labs - outpatient clinics - pharmacy - intensive care - blood bank - blood disease unit - cancer unit)



Our Goal is to provide excellent medical care, change our patients' lives for the better, and draw a smile on their face. This is under the umbrella of our wide medical edifice, and for that, our medical staff was selected with extreme care and a unique mix of the scientific and practical experiences, from consultants, doctors, nursing staffs, laboratory technicians and radiology. To make this package complete, we provided a blood bank for all the services to be present in one place.



We determined our permanent objective to present 24-hour service through the emergency department to be the readiest we can to care for our patients.

In the design, we took into consideration the spacing, ventilation, and beauty this is from the architectural perspective. From the medical perspective, we took care of the calmness and peace of mind. We have not failed in choosing our location, which is next to Al-Hossary Mosque to be easy and accessible for everyone.



Our medical fortress consists of 110 beds that service all the specializations with different hotel tiers, from royal wings - premium first class rooms - normal first class rooms.

Qudorat Al-Wadi has been prepared to a high-quality level with the latest medical devices and equipment, selected with care to provide the best and most accurate diagnostic results to provide you with the highest quality medical care.

We strive at Qudorat Al-Wadi to apply quality standards and infection control to present it in a safe and distinguished fashion, while keeping in mind prices suitable for all social classes

That is why we chose our permanent slogan to be "Qudorat Al-Wadi...we got together so you could be reassured"

“ Tamakkon ”

These branch was created to provide high-quality services.

1- Pulmonary Rehabilitation Unit

It is a supervised program focused on practicing breathing techniques, training, and educating people with lung problems. The goal is to help them improve their quality of life, learn to breathe easier, and even improving their lung condition. It can help anyone with chronic breathing difficulties.



2-Sports Medicine Unit

Sports medicine focuses on the prevention and treatment of sports injuries; how they can continue to participate in sports while recovering their injuries and give nutritional recommendations. And helping athletes improve their athletic performance; recover from injury, and preventing future injuries.



3- Lymphatic therapy unit

Lymphatic drainage therapy helps move excess lymph fluid that collects in the body through the lymphatic vessels. This type of treatment is most effective if you suffer from swelling, inflammation, infection, hormonal imbalance, fatigue, depression or anxiety.

4-Bedsore treatment unit

Bedsore is a disease that affects skin, because of the patient's inability to move and/or body positions, and also the pressure of the bed on the skin, which impedes the proper blood flow to the skin, which is treated through ozone therapy.

5-Rehabilitation unit for orthopaedic and neurological cases

Orthopaedic rehabilitation and the treatment of the following cases, post-fracture surgeries, joint replacement, cruciate ligament cases, knee cartilage injuries, herniated discs in the neck and back, stiff joints, rheumatoid, bone deformities, curvature of the spine, and calcaneal spur.



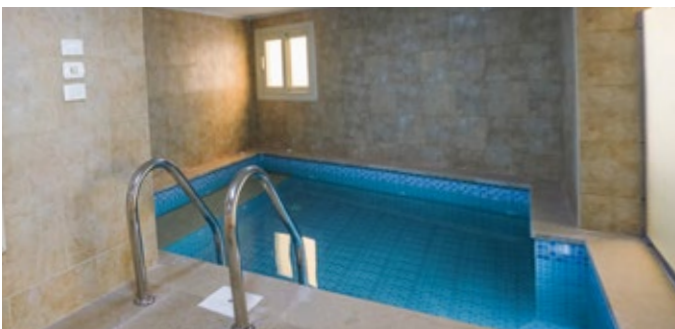
6-Stroke and spinal cord

It is a program of different therapies designed to help you regain skills lost after a stroke. Rehabilitation can help you improve movement, speech, strength and daily living skills. Stroke rehabilitation can also help you regain your independence and improve your quality of life.

7-Domestic residence

8-Hydrotherapy unit

It plays an important role in relieving pain. It also improves joint movements and helps muscles relax. Increases muscle strength and endurance using its water repellent property.



El - Mansoura Arab Hospital



“Arab Hospital” is a private general hospital located in the heart of the Nile Delta, Mansoura, which aims to serve a large mix of patients mainly from Nile Delta, Cairo, and the Arab world as well. The hospital offers highly



specialized medical service and international quality standards, and comprises 112 beds, 28 special cares, family to isolate the beds, 4 operations units, and 30 clinics.

Future Purpose



Our **purpose** is to establish an international hospital in accordance with the highest standards of technology, and equipped with the most modern and up-to-date methods of diagnosis and therapy in all fields of medicine.

It is provided with the latest Western scientific equipment from Europe and the United States. We are growing to be a multi-chain organization and we have a number of strategic objectives to obtain different geographic location accesses, The hospital total space is 4800 meter. The size of the invested capital in this massive project is \$ 25,000,000.



ELBADY

Investment

01

SIS Medical

founded in 2007 Winterthur, Switzerland. SIS Medical has always been dedicated to develop, produce and distribute innovative high performance PTCA Balloon Catheters which are designed to facilitate the daily work of the user, help to extent treatment options and to improve the quality of patients live.

02

BIOTRONIK

is a leading global medical device company with products and services that save and improve the lives of patients suffering from cardiovascular and endovascular diseases.

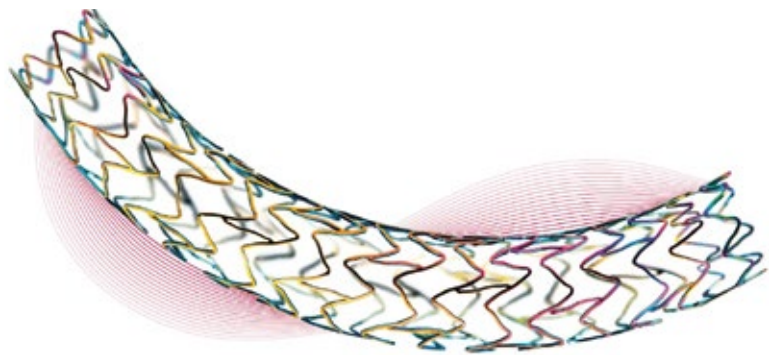
03

GALDERMA

provides prescription drugs and aesthetic solutions, along with consumer care products that go beyond treating skin problems. Our range offers protection and enhancement of healthy skin, treatment for compromised skin and rejuvenation of ageing skin.

ELBADY was founded in 2008 as one of the major companies involved in veterinary and agricultural fields. It is mainly specialized in an importing, trading, and distributing veterinary medicines.

Then in 2018 the company's activity expanded to become an agent for many international agencies specialized in healthcare sector



The size of the invested capital is \$ 3,000,000 (\$ 5,000,000 at the time of investment), and the average annual sales volume is \$ 15,600,000.



B) Education sector



“Together” Company

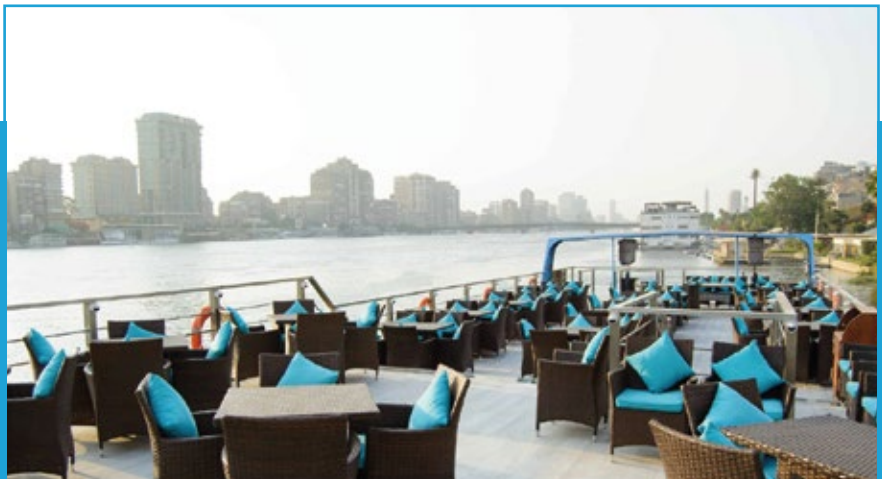
started in 2015 with a chain of international nurseries and preschools (**Kids Lovers Academy**) to provide a highly qualified education. The number of pupils enrolled in KLA since the opening is 4000, the number of branches is 4, the size of the invested capital is \$ 1,200,000 (\$ 2,500,000 at the time of investment), and the average annual sales volume is \$ 1,000,000.

C) Hospitality sector

“Atlantis” was set out in 2014 creating a food concept that could revolutionize dining in Egypt

Leading the growing wave of “foodies” in the Middle East, Atlantis wanted to reward and acknowledge those who believed eating well should not be a luxury

The restaurant was about eating well every day.



Our restaurants are currently covering vital areas in Cairo, such as Manyal, Mohandessin, Sheraton and Haram center kitchen.

The size of the invested capital is \$2,800,000 (\$6,250,000 at the time of investment), and the average annual sales volume is \$7,000,000.

D) Advertising sector

Brand Experience Factory BXF is an advertising factory , entrepreneur, marketing pro and consultant that's been in business since 2010. Advertising is our passion.



Our services

- | | |
|-------------|--------------|
| Marketing | Exhibitions |
| Showroom | Production |
| Decorations | Consulting |
| Branding | Websites |
| Print | Outdoor |
| Interiors | Exteriors |
| Development | Construction |



The size of the invested capital is \$ 1,800,000 , and the average annual sales volume is \$ 1,500,000.

E) Real estate Development sector

ELFOLY and **AL Mahmoud** Construction & Real estate Development



We are inspired by the fanciness of architecture, design illuminations, and visionary mindsets. We are always keen to provide our market with only the high-end quality that will assure a lifetime of durability for our clients.



EI FOLY construction & real estate development was introduced to fulfill the building and decorating gap existing in the market. Being a sister company of "EI FOLY Group", we are keen on proving our excellency in creating, designing, and implementing contemporary methods along with executing the group's wide commercial projects. We can reach all kinds of specifications in demand according to the consultant engineer's requirements.





OUR MISSION

To achieve customer appreciation and stakeholder satisfaction by engaging to the highest level of performance and creativity keeping abreast of the aimed results.

OUR VISION

To be a global leader in engineering solutions by providing customized and innovative building material products and delivering high-value quality products and services for the construction industry



OBJECTIVES

To build a dynamic culture enabling us to continuously improve our quality of services while delivering on time. We aim to adapt our customer's targets to nurture strong business bonds and achieve a win-win strategy



Our main goal is to assure a high-end quality with the sharp delivery time to our clients' doorsteps.

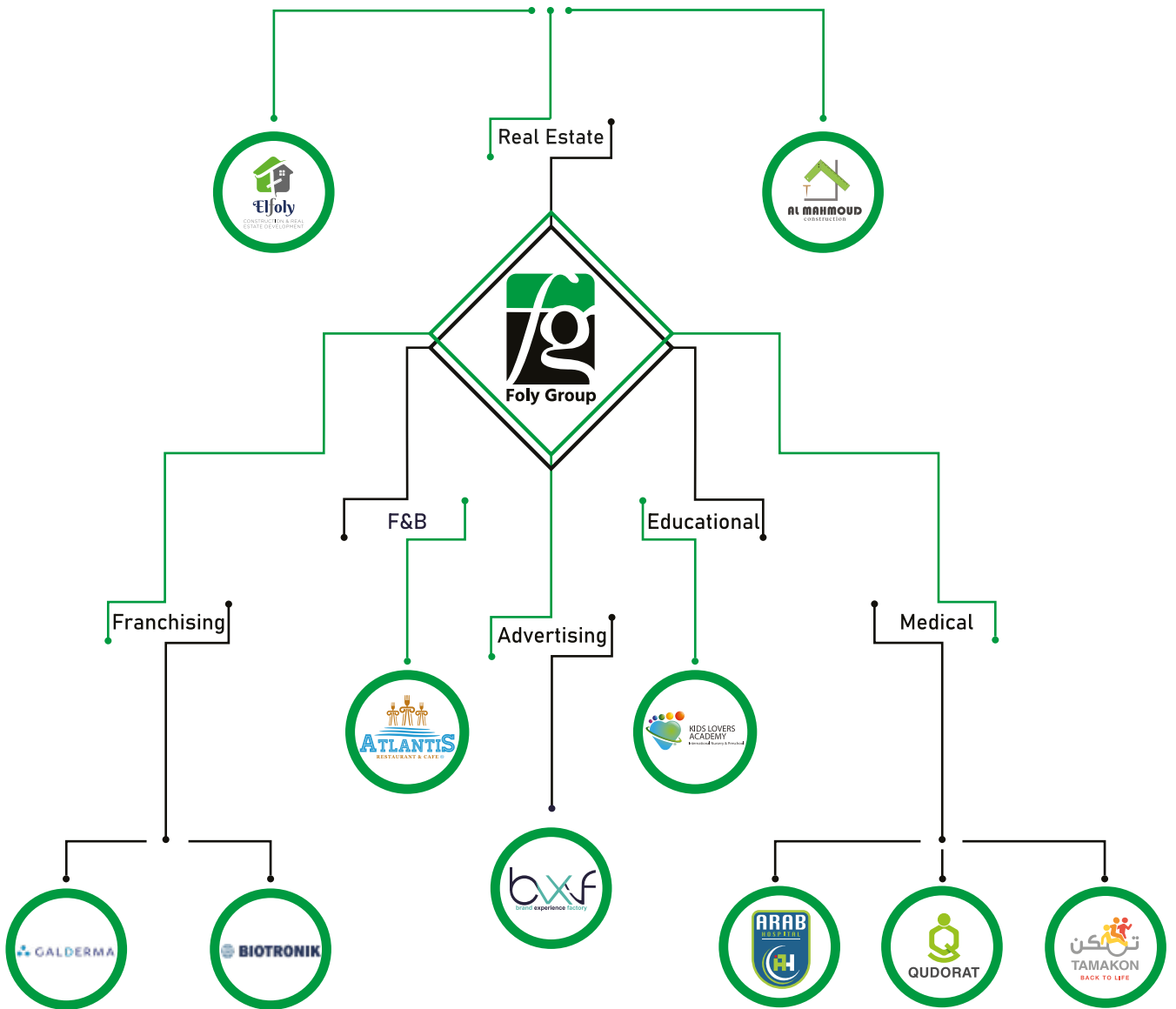
We propose solutions, and our definition of the term "solution" is providing the ultimate and consistent needs of businesses to overcome current and prospect issues. Solutions are at its best when it stands the test of time and the test of quality and efficiency. Because what we care about the most is our clients' satisfaction





Finally every day we are taking one step closer towards the world we want tomorrow through our absolute commitment. More than 1100 employees have contributed that success. With an annual training budget of \$500000. We affirm our commitment to our role towards community service, whether through the ELFOLY Charitable Foundation or through training Egyptian students in all our companies to qualifying them for the labor market

Since **El FOLY Group** was founded in 1996, we have shown our continued commitment to the company and the country. We shape our future with a strong entrepreneurial spirit based on our proud family business tradition. Guided by our values, we pursue a long-term vision for our company. Together, with our solid financial basis, this shapes the foundation where we build successful future generations.



Follow Our Galaxy

Head office:

14, El-Thawra Street,
Dokki, Giza, Egypt

Number

(02) 37494531

info@folygroup.com

Follow Our Galaxy

